

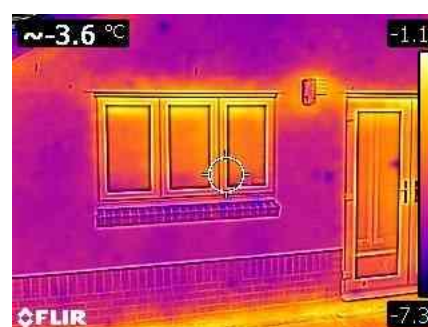
Tel :07528 493181 Info@strettonclimatecare.org.uk www.strettonclimatecare.org.uk	Energy Advice Drop In The Wellbeing Centre Church Stretton Thursday's 10.00 – 12.00	
--	--	--

INFORMATION SHEET No. 41 DATE OF ISSUE August 2023

Thermal Imaging

With high energy costs and the need to make our homes as energy efficient as possible, it is helpful to know exactly where heat loss occurs and how well a property is insulated. An uninsulated property can lose a great deal of heat up to the following %'s, roof 25%, walls 35%, floor 15%, external doors and drafts 15%, windows 10%. Identifying areas of heat loss is easily done with a *thermal imaging survey*.

In this thermal image picture, the lighter colours show areas where heat is particularly leaking out: a) around the top of the window and door, b) around the outside light where the cavity insulated wall was drilled to take the power cable and c) at floor level as the concrete floor of this property is almost certainly un-insulated.



In a thermal picture, the lighter the colour, the greater the heat loss. Such images need to be taken at the beginning of the day, after the heating has been on for a couple of hours and the sun has not had the opportunity to heat the outside fabric of the building.

Thermal Imaging Service

Stretton Climate Care (a charity) offer a *free* Thermal Imaging Service to households within a 6-mile radius of the centre of Church Stretton as we feel it is so important that our homes are well insulated.

The survey is done entirely from the outside, taking a series of images of roof and walls. These images are then sent to the householder and a discussion ensues as to the results and how improvements can be made. Although the service is free, we do ask users to consider making a donation to our funds to help cover costs. For more information please contact info@strettonclimatecare.org.uk

Caution - Please Read this:

Our Advice Note has been carefully prepared and is, as far as we know, accurate at the date of publication. However, things change very fast in the world of technology and in government schemes. Sometimes parts of Advice Notes become outdated and may not offer best advice very soon after publication. We do our best to keep them up to date with the limited resources we have. Furthermore, our advice may not be appropriate for your particular circumstances. We advise that you get advice from a relevant expert before making changes. We may be able to offer further advice or make suggestions on who to contact if you get in touch with us. We are not technical experts but have many years of offering common sense advice and we recommend you should not rely on our Advice Note alone for making decisions. The national advice centre Energy Savings Trust is a good source of information.

See <https://energysavingstrust.org.uk/>