



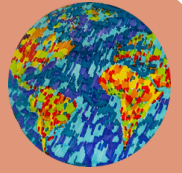
## Autumn Newsletter 2024

Stretton Climate Care

Photo by Geoff Taylor

### This issue:

- What has SCC been doing?
- Jargon Buster
- Street Survey
- One small step- Buying local
- Things coming up



### What have we been doing recently?

- Our **Repair Cafe** goes from strength to strength taking place every 2nd Saturday in the month
- We took part in the **Family Fun Day** in the park and launched our **biodiversity maps** of the Strettons to record what individual households are doing to help encourage biodiversity and carbon reduction in our region. To date, 108 households have marked our map! Watch out for more opportunities to make **your** mark! or download the form here: <https://strettonclimatecare.org.uk/publications/#>
- Committee members took part and led some of the talks and workshops at the **Accelerating Change: Spurring on climate action in our communities** conference.
- At our annual **Duck Race** in Cardingmill Valley, we showed people on a postcard map where the 20mph zones are in Church Stretton.
- **Street Survey** - see below

### Jargon Buster no.2

### What is a carbon footprint?

- The last newsletter explained what **CO2** is and how other gases are contributing to climate change. A **carbon footprint** is the total amount of greenhouse gases (including carbon dioxide and methane) that are generated by our actions. Our average household emissions in the UK are around **13 tonnes** of **CO2** equivalent per year.
- Everything we do and purchase has its own footprint; a person's **carbon footprint** is the combined total of the products we buy and use, and the activities we undertake. For example: household energy use, transport, food, and everything else, which is mostly the products we buy, from utensils to clothes to cars to television sets.
- We can measure our **carbon footprints** with various calculators, however, we should be aware that they are never wholly accurate – it is a very complex process to measure. It can be a starting point to know what your own household or personal footprint is. It may be possible then to take some steps to reduce your own or household's footprint. Our average household energy consumption is around **3.4 tonnes** of **CO2** per year.
- Find some calculator links here: <https://strettonclimatecare.org.uk/energy-and-buildings/>



## Street Survey

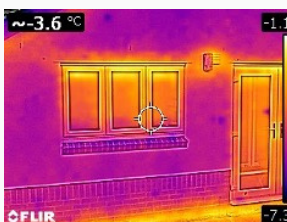
In September we are conducting another street survey.

Calling door to door after an introductory letter and information card, our team offer a **free detailed home energy survey**, looking at how the householder uses energy and exploring with them ways to reduce consumption and costs. We will also produce a carbon footprint score.

We have covered virtually every home in the Stretton's over the past 18 years and on average **have helped reduce consumption by at least 10%.**

Our survey form is now being adopted by numerous Climate Concern groups across the county.

We will also be offering our free **Thermal Imaging survey** which gives an easily understood pictorial image of where the property is leaking valuable heat.



Showing heat loss round top of windows and below damp course as the floor of this property is uninsulated.



# One Small Step.....

Did you know that importing and transporting our food accounts for over 10% of the UK's CO2 output?



- We know that here in Church Stretton we are not blessed with a vast array of shops selling items at competitive prices. However, we are lucky enough to have a small variety of independent shops selling food, clothes, books, gifts and craft materials.
- Even in our supermarket we can make more ethical choices.
- We may not have the luxury of a greengrocers in town anymore, but check out the labels on the food that you buy in the Co-op. Could you take **one small step** and swap your vine ripened tomatoes from Spain with cherry tomatoes from Worcestershire? That would save a whopping 960 miles!
- Other products could be swapped for something more local- try to take **one small step** and see what you can find in your local community.



[www.foodmiles.com](http://www.foodmiles.com)  
[www.shoplocaluk.org](http://www.shoplocaluk.org)



Let us know how you get on. Share with us on email or social media. You can also find many of us at the Repair Café at The Scout Hut every second Saturday of the month.

**Take one small step, happy local shopping!**

Stretton Climate Care [Facebook] @EcoWarriorAndCo [Twitter/ X] and @strettonclimatecare [Instagram]

## What's coming up...

- Next **Repair Cafe** is at a new venue for October 12th- 10am-12pm **at the Methodist Church Hall** on Watling Street South - November 9th is back in the **Scout Hut**
- Our **AGM** is at the **Methodist Church** on 22nd November at 7pm with guest speaker **Colin Preston MBE, Chair of the Matches Local Nature Partnership** at 7-30pm - everyone welcome.
- With the changes to winter fuel payments, look out for our **Energy Advice Drop-in** sessions in association with the **Town Council** as well as our regular sessions in the **Wellbeing Centre** every Thursday 10-12pm
- Look out for our article on heat pumps coming up in the **Focus** magazine
- Visit households in Shropshire **GREEN OPEN HOMES** 19-27th OCT  
[www.greenopenhomes.net](http://www.greenopenhomes.net)



We invite any new **TRUSTEES** and **VOLUNTEERS** to join us, please enquire..

